

Elegante
FASHIONABLE ALWAYS

ALPAS EURO



Creating fashionism

TURN YOUR WALL INTO A RAMP



Introducing the ravishing beauty of home decor that is creating a new dimension of fashion where none existed.

Welcome to this world of niche fashion that will redefine experience, break boundaries beyond your wildest imagination and relegate every other element of furnishing into irrelevance at worst or make them look like prehistoric relic at best. It will flame such a passion for fashion in you that you never knew existed.

INTRODUCING
OUR LINE-UP OF DIVAS

INDEX



STONEX
02



MAGIC
BLACK
06



COPPER
GRACE
10



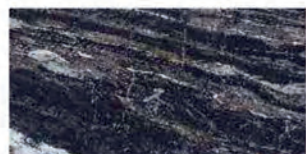
FOSSIL
GOLD
14



COTTO
SILK
18



ELECTRIC
BLUE
22



BLACK
THUNDER
26



TRAVO
GOLD
30



HARMONY
34



BRAZIA
BLUE
38



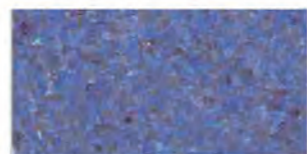
BRAZIA
STONE
42



SODA
BLUE
46



SODA
ASH
50



LAPIS
54



AQUAISH
58



PRETIO
HAZEL
62



PRETIO
LILAC
66



STATUS
GOLD
70



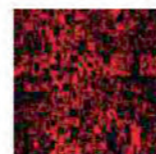
PERALO
74



RED
FIRE
76



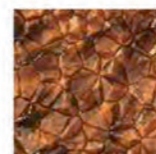
LINEA
78



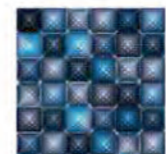
RUSSET
80



FABRIO
82



ROCK
GOLD
84



BLUE
SAPPHIRE
86



AUTUMN
88



MAPPLE
GOLD
90



FUSION
92



ETHNIQUE
94



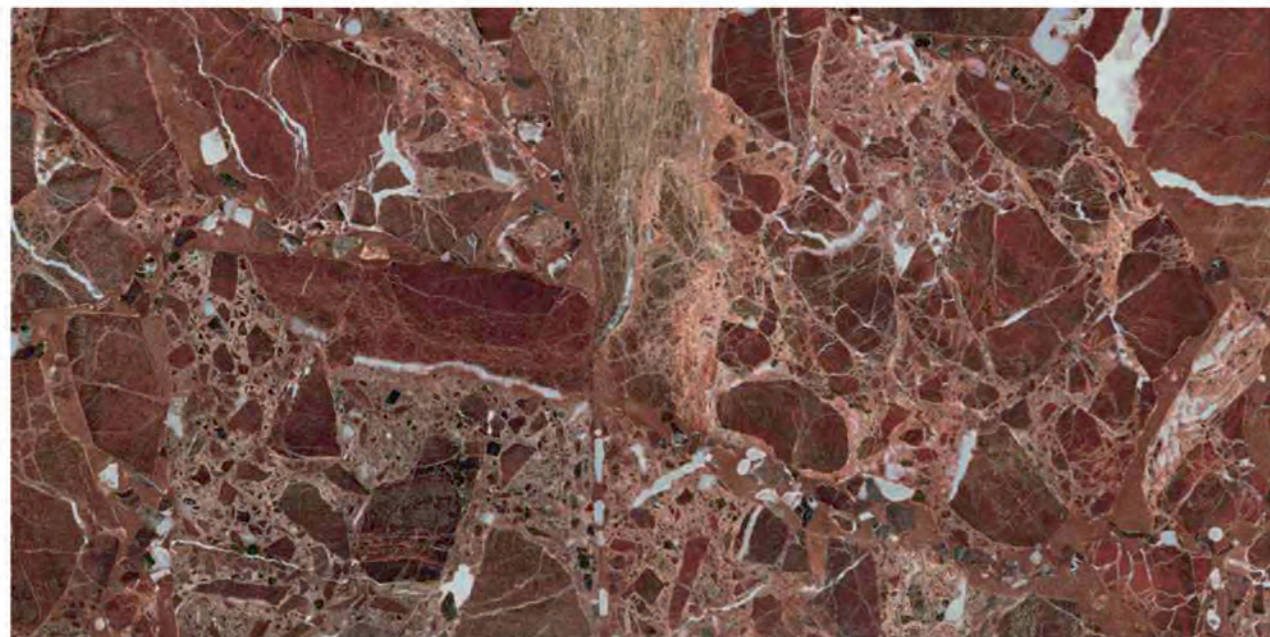
HERITAGE
96



ANTIQ
98



Creating fashionism
Elegante
FASHIONABLY ALWAYS



3003-STONEX

600 x 1200mm

STONEX

With this design, we brought a piece of Mars on Earth. The mysterious red planet that has intrigued man since time immemorial, our cosmic neighbour that has been giving us cold shoulders for millions of years and whose barren rocky terrain has hooked many a writers and film makers, couldn't evade the attention of our designers.

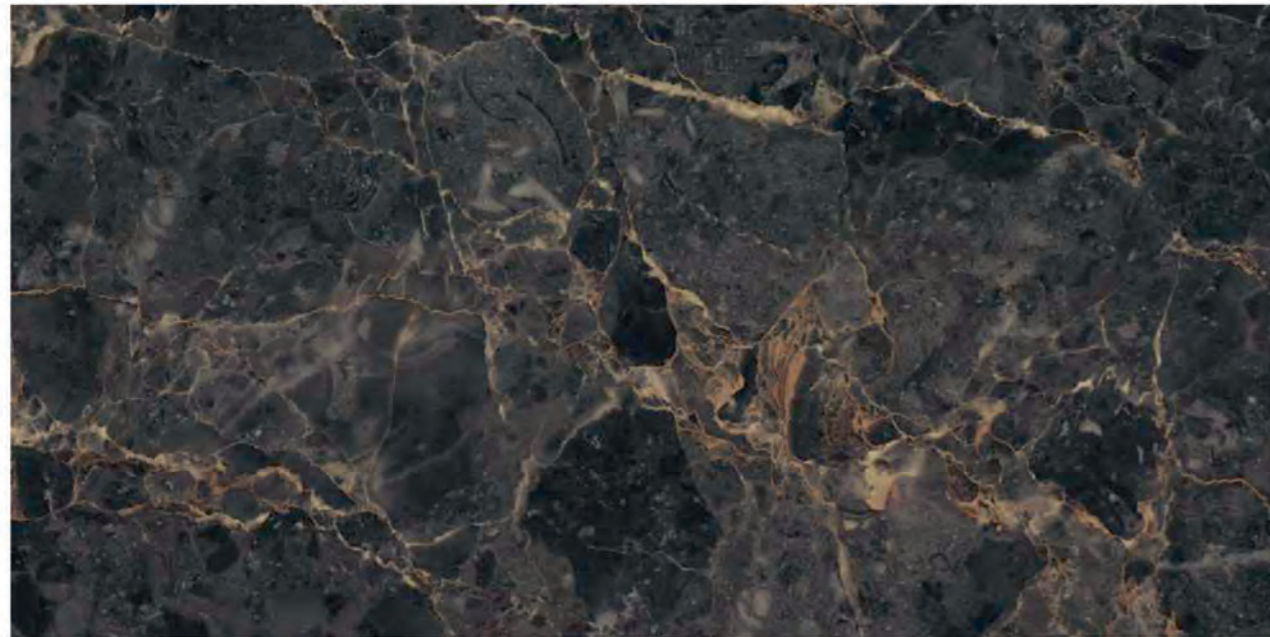
We captured its story to bring a literally out-of-the-world design to your walls.



WHERE
PEARLS ARE
REDEFINED

Creating fashionism





3004-MAGIC BLACK

600 x 1200mm

MAGIC BLACK

There is a microscopic world all around and inside us to which we are a macrocosm. Anyone who has used an electron microscope zoomed in on a spick-and-span glass would exclaim 'My God! There is an entire universe out there!'

This design is a tribute to that microcosm that makes us possible, to that invisible world rendered inexistent by our limitation. This design is a magnifying glass that tells you that small is big and inspires you to seek joy in the small. No wonder we call it 'Magic'.



THE POWER OF BLACK

Creating fashionism

Elegante



Elegante
FASHIONABLE ALWAYS



3005-COPPER GRACE

600 x 1200mm

COPPER GRACE

Call it fashion or fad but colouring your hair is definitely the in thing now. Our design of Copper Grace is inspired by fashion that is focussed on such hairdos.

It has streaks of burning copper interspersed with perms of flaming gold on a bed-rock of jet black natural hair spread over a vast canvas of opaque. Let our décor aficionados fashion the couture for your walls.



THE GRACEFUL FASHION

Creating fashionism





3006-FOSSIL GOLD

600x1200mm

FOSSIL GOLD

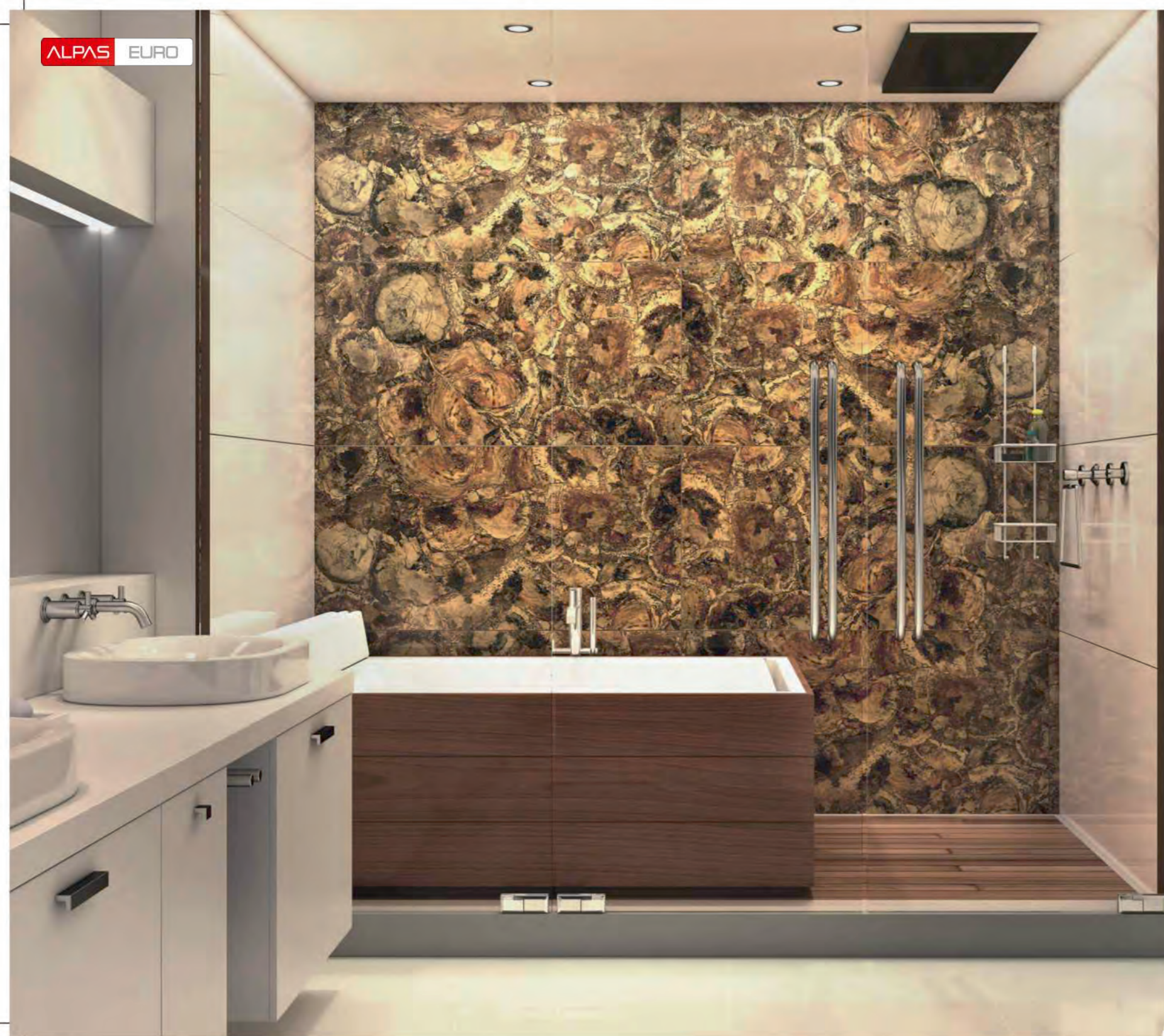
As a tribute to the liquid gold, we decided to dedicate one design to the inspiration from the fossils. In the sepulchral terrain of intermittent rocks fossilized by the detached passage of time, we bring pre-historic relic to your walls.

Let the anachronism of primitive history in your modern life ignite an animalistic passion for fashion in you that was hitherto unknown even to the wildest part of you.



IGNITE YOUR PASSION

Creating fashionism





3007-COTTO SILK

600 x 1200mm

COTTO SILK

Cotton and silk rarely make a great pair or so they say.
How can traditional plebeian go with regal aristocracy?
How can the ordinary mix with nobility they ask?
But we seriously wanted to break the myth.

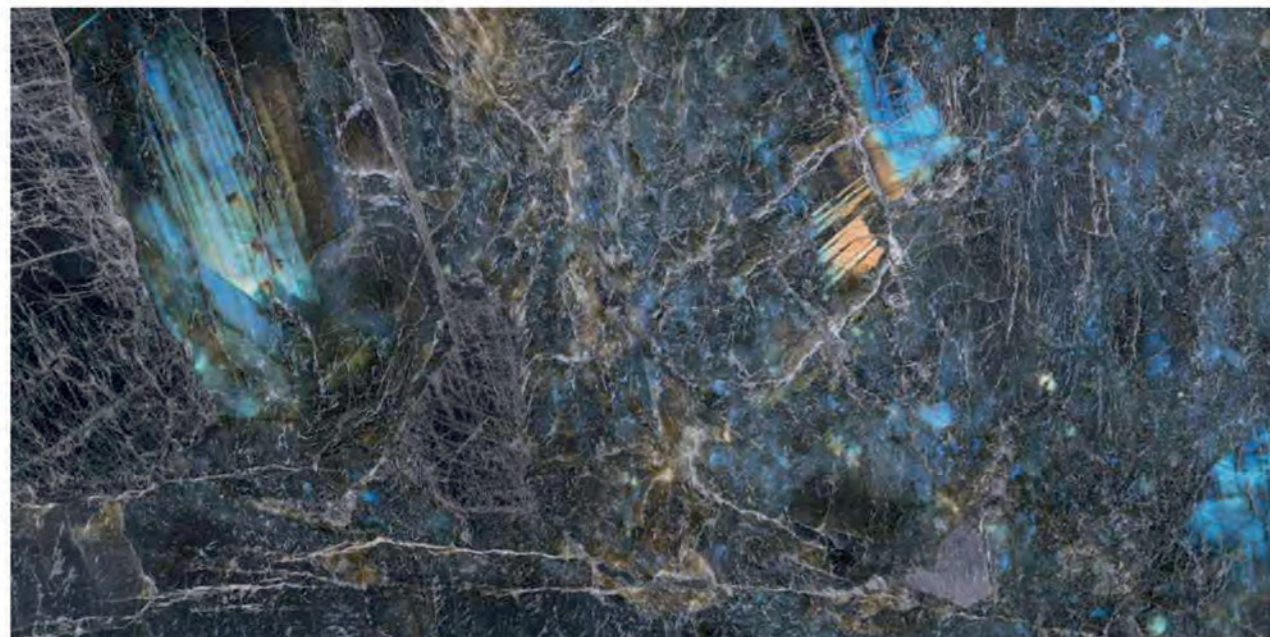
So we designed a new class where the sheer white of cotton
merged amorphously into reddish tinge of silk to make
a class of its own that retained the earthiness of cotton along
with royalty of silk and yet enriched the richness of silk.



SMOOTH
LIKE
SILK

Creating fashionism





3008-ELECTRIC BLUE

600 x 1200mm

ELECTRIC BLUE

It's almost unimaginable to have an ensemble collection of any sort that does not include a blue, the colour of Earth, or its shade. And we don't intend to make an exception to this rule.

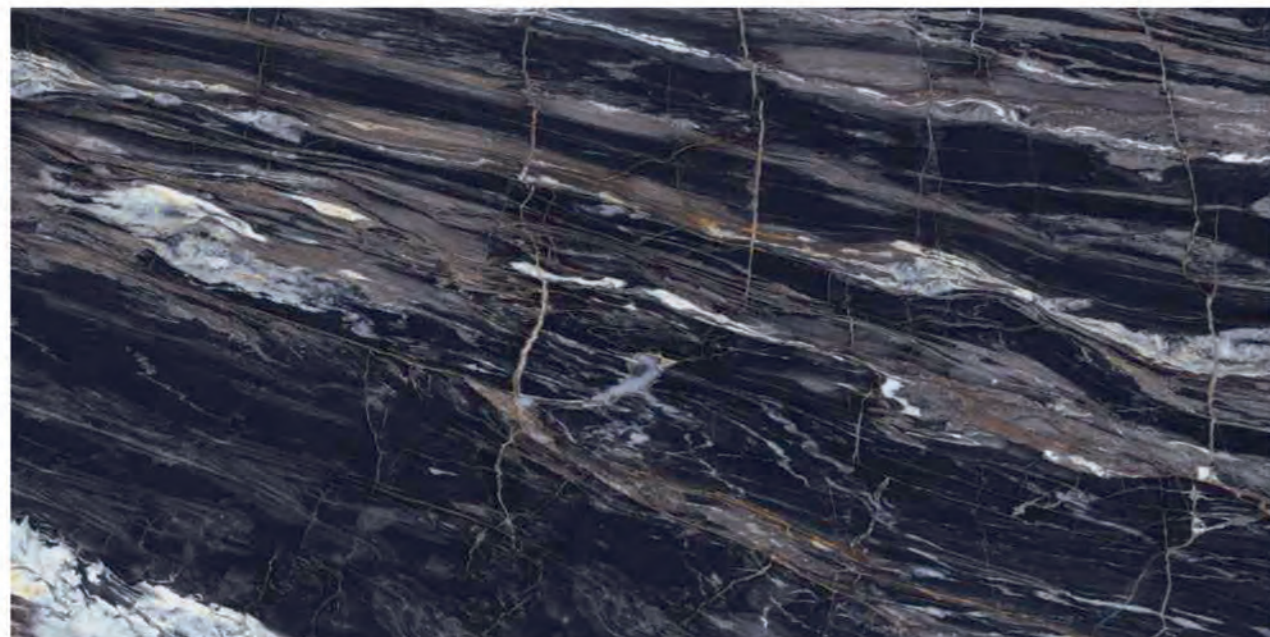
Since blue reminded us of Earth, we mashed the colour with tinges of green and dashes of black and their shades to give it a feel of rugged earthy landscape clearly showcasing green valleys and naked mountains dotted by water bodies as if seen from the not so far outer space. This is earthy fashion at its very best.



KISS
YOUR
BLUES
GOODBYE

Creating fashionism





3009-BLACK THUNDER

600 x 1200mm

BLACK THUNDER

They say, when you go black, you don't go back. Considered for a very long time as the devil's colour, we have seen ad nauseam how black accentuates the beauty of whatever it touches, especially the white.

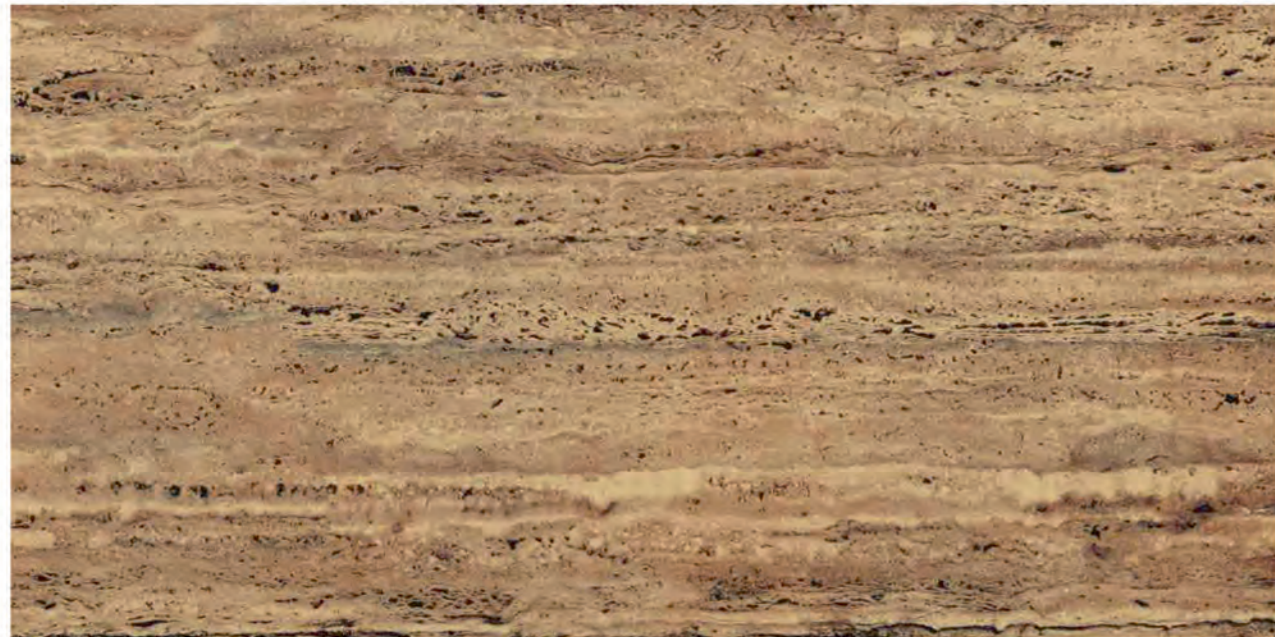
So we present here a confident blend of black 'n' white with some shades. Think of it as if someone just wiped off the night sky as if it was a black board and the erased stars and moon left their imprints upon the dark azure.



BLACK DEFINES FASHION

Creating fashionism





3010-TRAVO GOLD

600 x 1200mm

TRAVO GOLD

We just changed a famous old adage.
It now goes like 'Wall that glitters is definitely gold.'
How else can you describe walls that
have an innate golden lustre?
Imagine the wind induced design in the
sand dunes of the African dry lands.

Now spray a generous portion of yellow metal coating
on every grain of sand which then reflects the sunlight
into a dazzle of ubiquitously gilded glare.
Now look at the passionate design of Travo Gold.



24 CARAT GOLD

Creating fashionism





3012-HARMONY

600 x 1200mm

HARMONY

It takes a lot of contemplation and courage to paint an abstract painting. But the joy derived from looking at it is beyond comparison. The distinctive design and appealing patterns can take over your mind and imagination completely. Harmony is designed on the very same line of conception. It is a perfect mélange of vivid shades and ideal cut 'n' shapes. Each inch of this beautifully painted canvas narrates a tale of its own, which can definitely take you by storm. Besides, the dash of aquatic tinge creates a stunning impression of out of the world marine aesthetics.

MELODY
OF
GRACE*Creating fashionists*





3014-BRAZIA BLUE

600x1200mm

BRAZIA BLUE

Sapphires have never failed in any of their roles. Be it adorning or causing awe with shimmer and elegance, they are always at the top of their game. The same gem-like magnificence is here for you to embellish your space in the most elegant and sophisticated manner. Quirky shape of the design element works as the perfect silhouette for highlighting the inherent grace of this masterpiece. Allow a deep wide briny to run all around your décor, and witness optimistic vibes floating around you.



BOLD
AND
BEAUTIFUL

Creating fashionism





3015-BRAZIA STONE

600x1200mm

BRAZIA STONE

The wide world of woods is appealing, alluring and fascinating beyond words. It can take you on a ride of euphoria and bliss. Besides, its wilderness is spectacular. Now imagine getting the same belongingness, right in your space. Beautiful it would be!

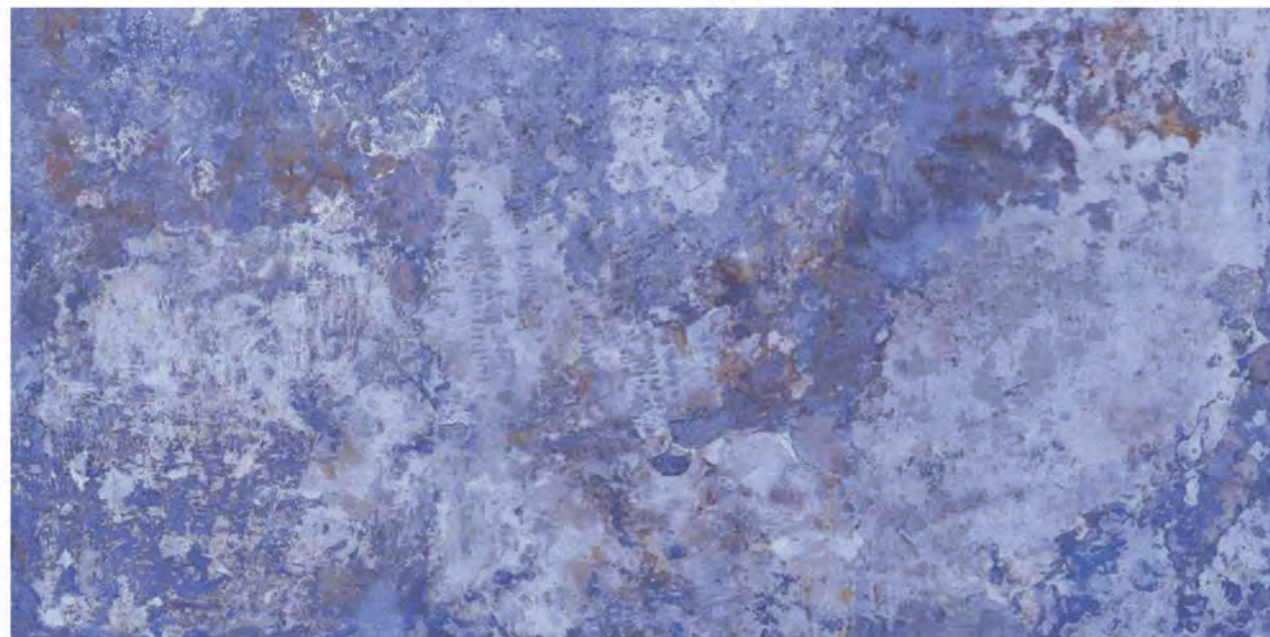
To satiate this quest of yours, we are here with a pattern of quirky shapes pigmented in the shade of wood color, brown. Its view would be your perfect get away from the ruckus of the sedentary lifestyle.



AFFECTION
FOR
NATURE

Creating fashionism





3018-SODA BLUE

600 x 1200mm

SODA BLUE

Adventurous is the word that can best suit this piece. With the color of dark night sky and blotches similar to clouds, this tile design can take anyone to the trip of escapade. Let your fondness for your personal space skyrocket with these being there to sketch a wonderful nighttime visual having awe-inspiring finesse. However, if you are a water baby you might find it to be a deep blue ocean having recurring currents. Get these around and splash the joy of artistry around.

ENTHRALLING
IMAGINATION*Creating fashionism*



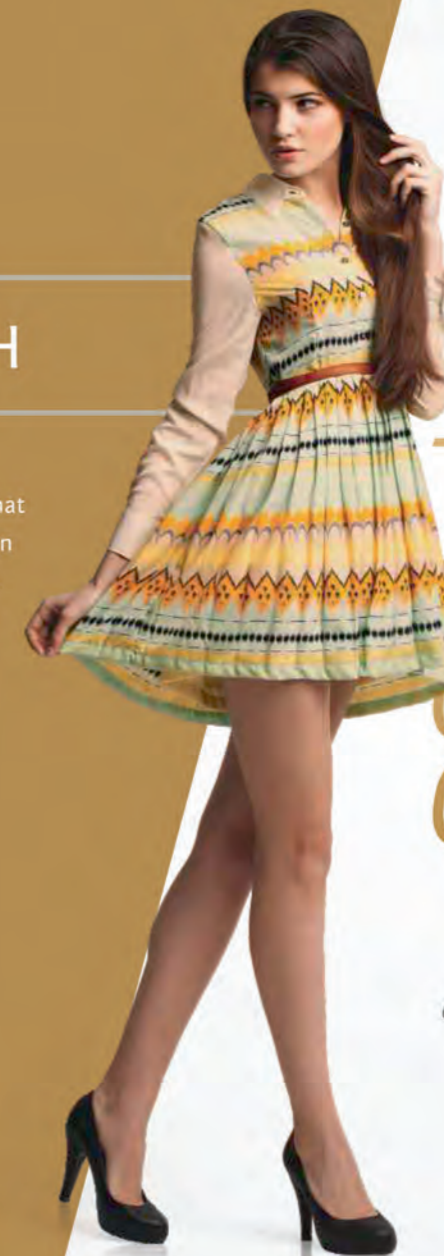


3019-SODA ASH

600 x 1200mm

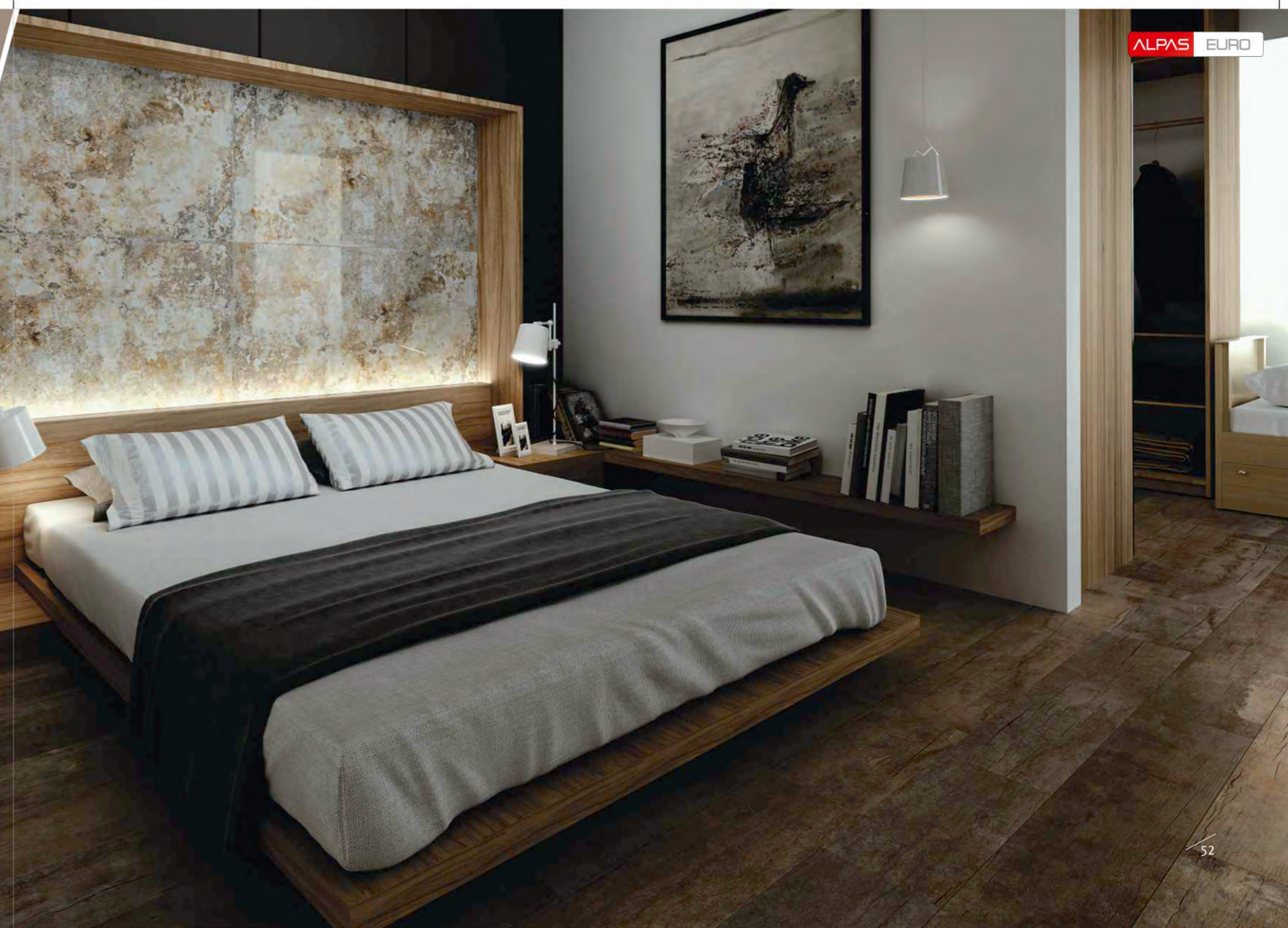
SODA ASH

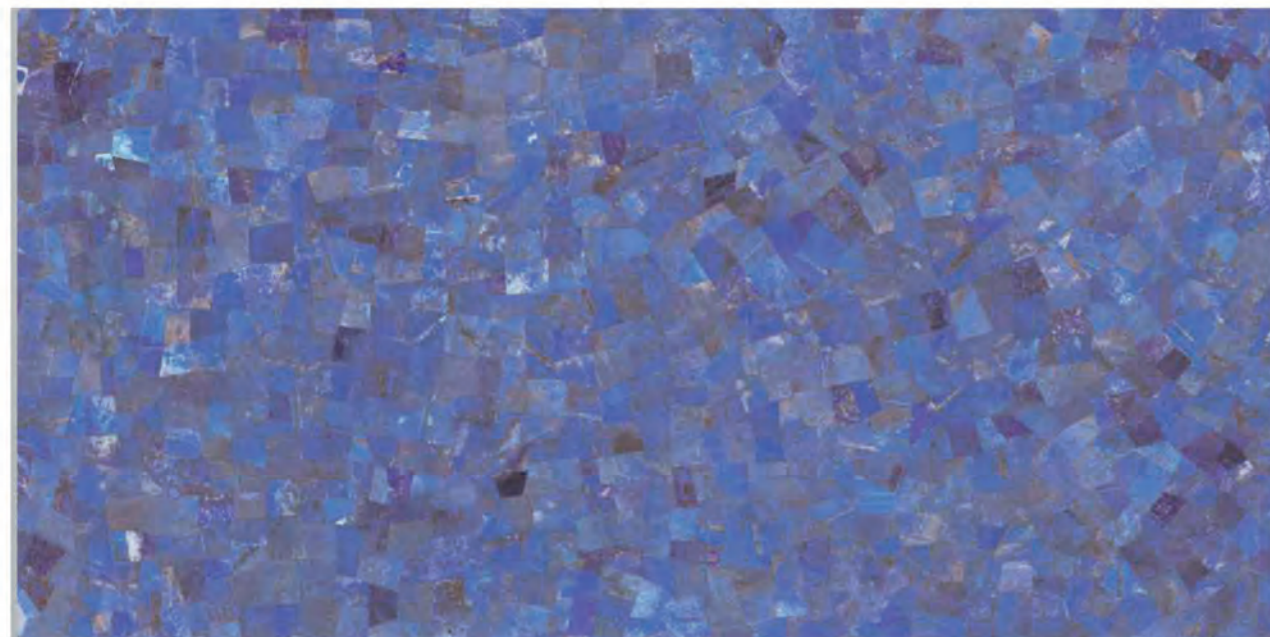
A perfect splatter as it looks; creates an artistic oxymoron that can compliment your space to the fullest. The striking design painted on the big brown canvas can leave anyone stunned. Vintage look, an appeal that yearns for attention and scattered hues make this piece a must jewel of your space. The charm of bygone days is perfectly imitated by these artifacts. It can distract some and can impress some, but it is surely not going to be unnoticed.



THE
COLOR
OF
CLASS

Creating fashionism





3020-LAPIS

600 x 1200mm

LAPIS

The color blue represents the sky, sea, and heaven. It is by far the most prominently seen color on our planet. It serves as a bond between us and nature's essential elements.

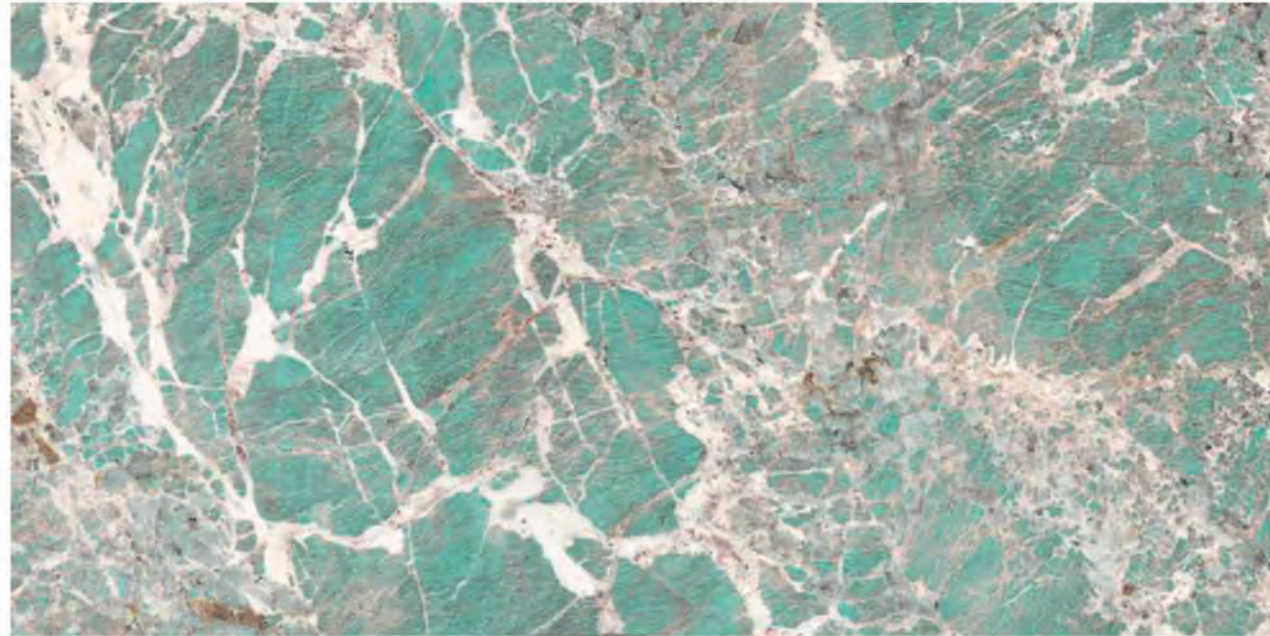
With Lapis, we developed a subtle mosaic of blue colored tesserae by stitching together several soothing tones of blue. With light and darker shades both equally used, the blue color accentuates the appealing nature of the tile.



EVER-
GLOWING
BLUE
MOON

Creating fashionism





3021-AQUAISH

600 x 1200mm

AQUAISH

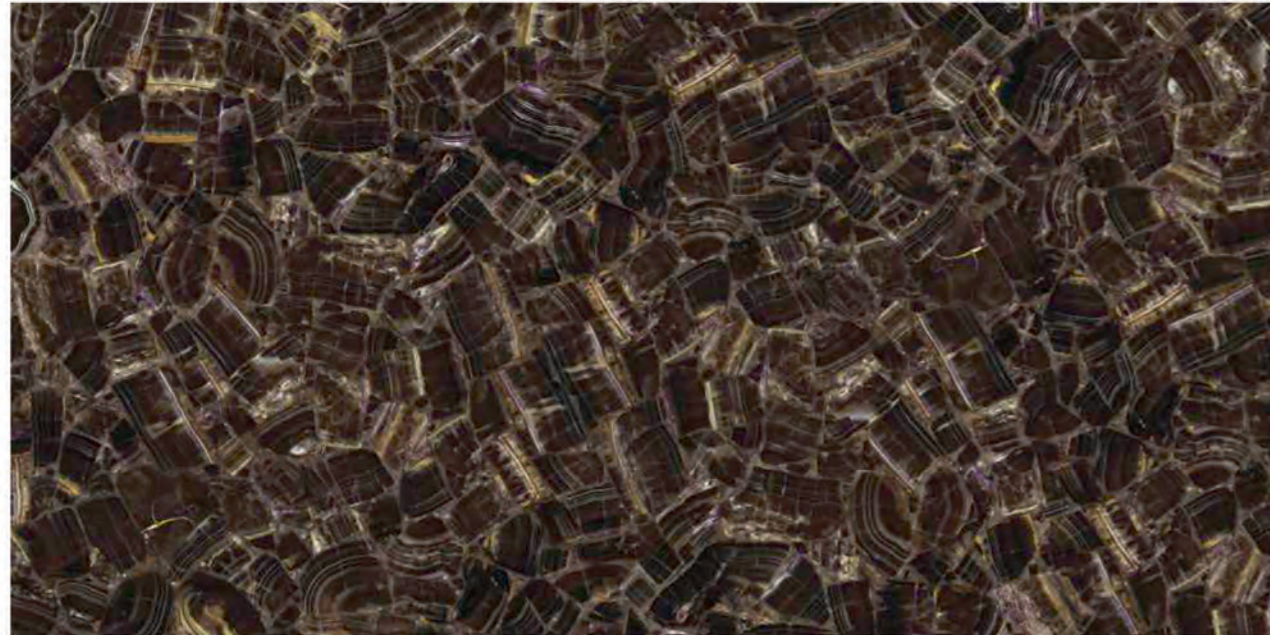
When asked most of the people would prefer to spend their time next to an ocean. The warm breeze and blissful atmosphere have a certain charm that couldn't be experienced anywhere else until now. With our Aquaish tile, we have tried to give you the blissful experience of being close to an ocean in the comfort of your own dwelling. With the use of light blue and white, the tiles try to visually replicate the scenic ocean views.



WAVES OF ELEGANCE

Creating fashionism





3022-PRETIO HAZEL

600x1200mm

PRETIO HAZEL

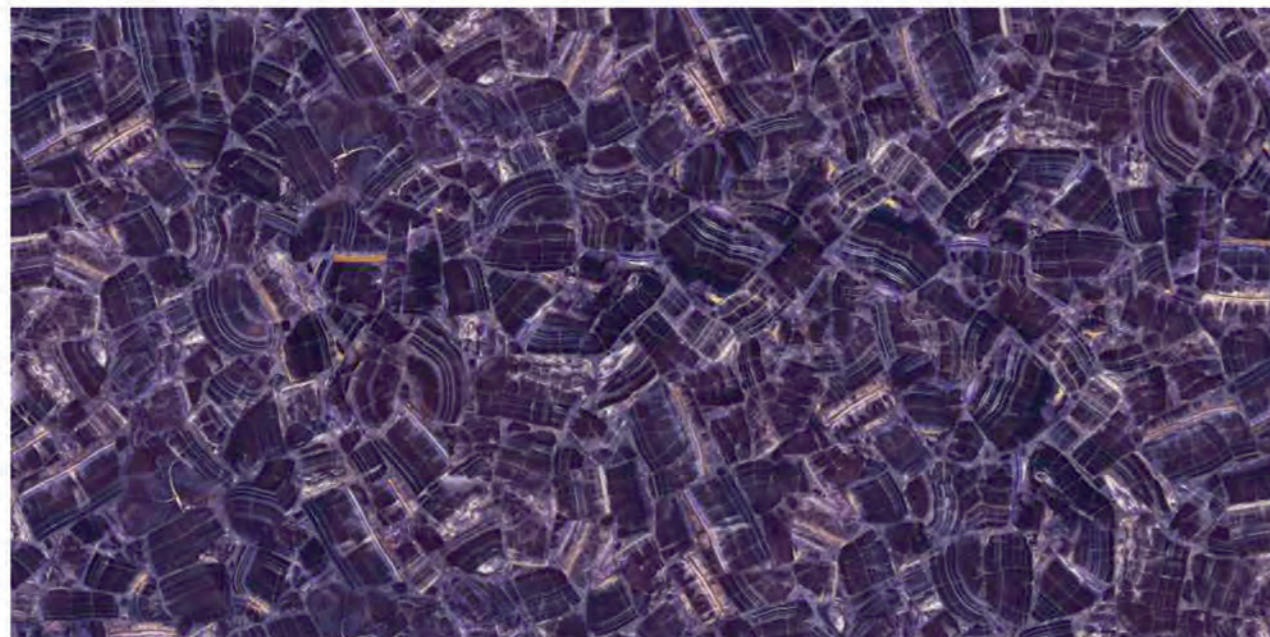
The most intriguing color of human eyes is hazel. Hazel colored eyes change color from time to time. Sometimes hues of brown are prominent and other times hues of green. In Pretio Hazel we tried to replicate the boundless beauty of the hazel colored eyes in our tiles. Giving the design a gleaming appearance, we tried to get it as close as to the bewitchment of hazel colored eyes. It will be difficult to take your eyes off something so charismatic.

IRRESISTIBLE AS HAZEL

Creating fashionism







3023-PRETIO LILAC

600x1200mm

PRETIO LILAC

Lilac a subtle shade of violet symbolizes confidence. The pretty and cool hues of lilac project creativity and wisdom all around. The use of lighter and darker shades of lilac and black in solid patterns gives the tiles a false gleaming look that is enchanting in every sense of the word. The abstract design on the surface of the tile makes it the center of attention more often than not.

PRECIOUSNESS
THAT
SPEAKS*Creating fashionism*





3024-STATUS GOLD

600 x 1200mm

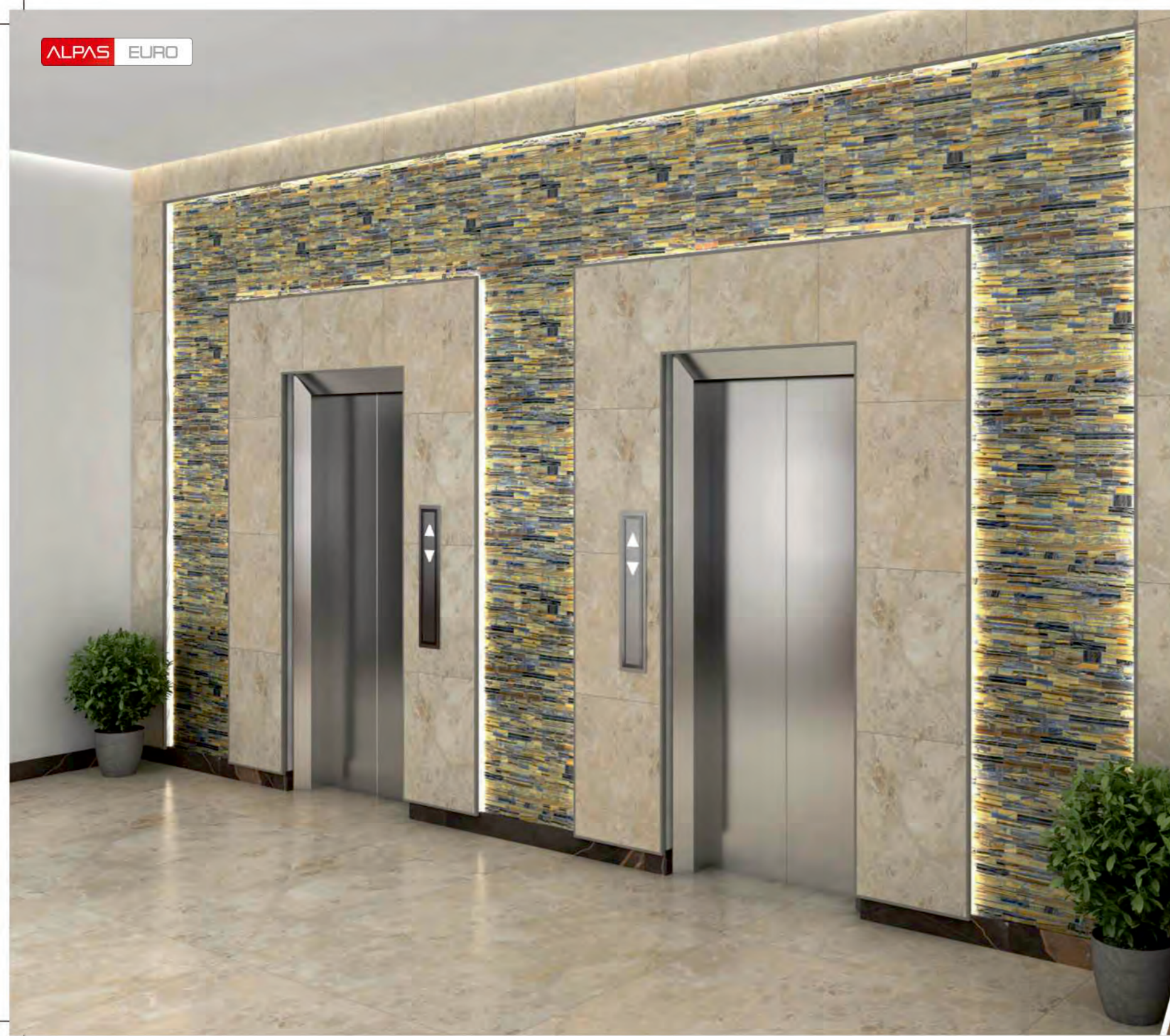
STATUS GOLD

There are not many elements on Earth that attract the human eyes and desires like gold. Gold and its shades are known for its eternal love and passion. To properly capture the enigma of gold and its allure, we crafted a surface that doesn't disappoint. With shades of blue, black and orange to complement shades of gold, this tile perfectly depicts the properties that make gold such a desired color and element.



DEFINE
YOUR
STATUS

Creating fashionism

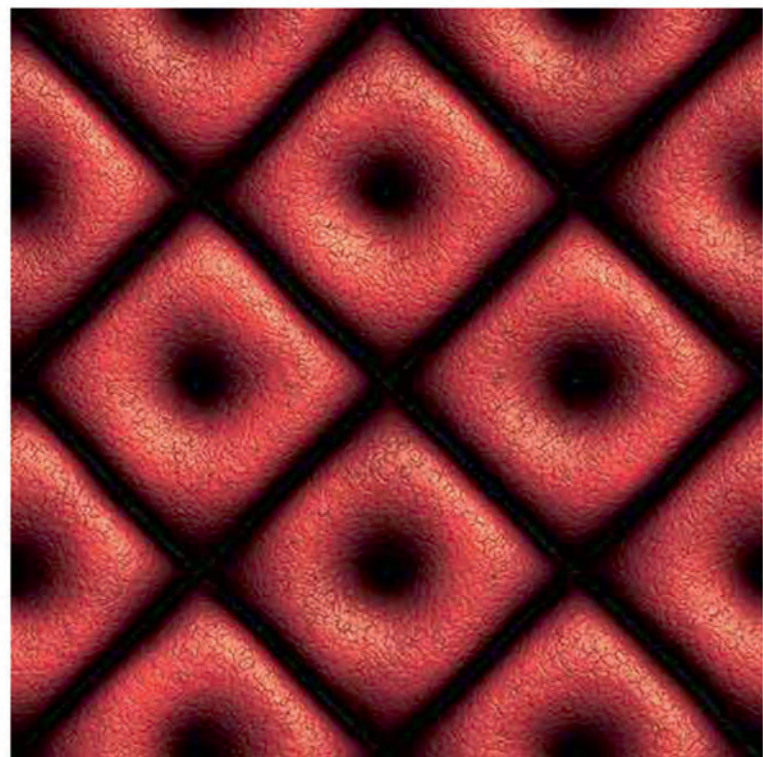




3016-PERALO

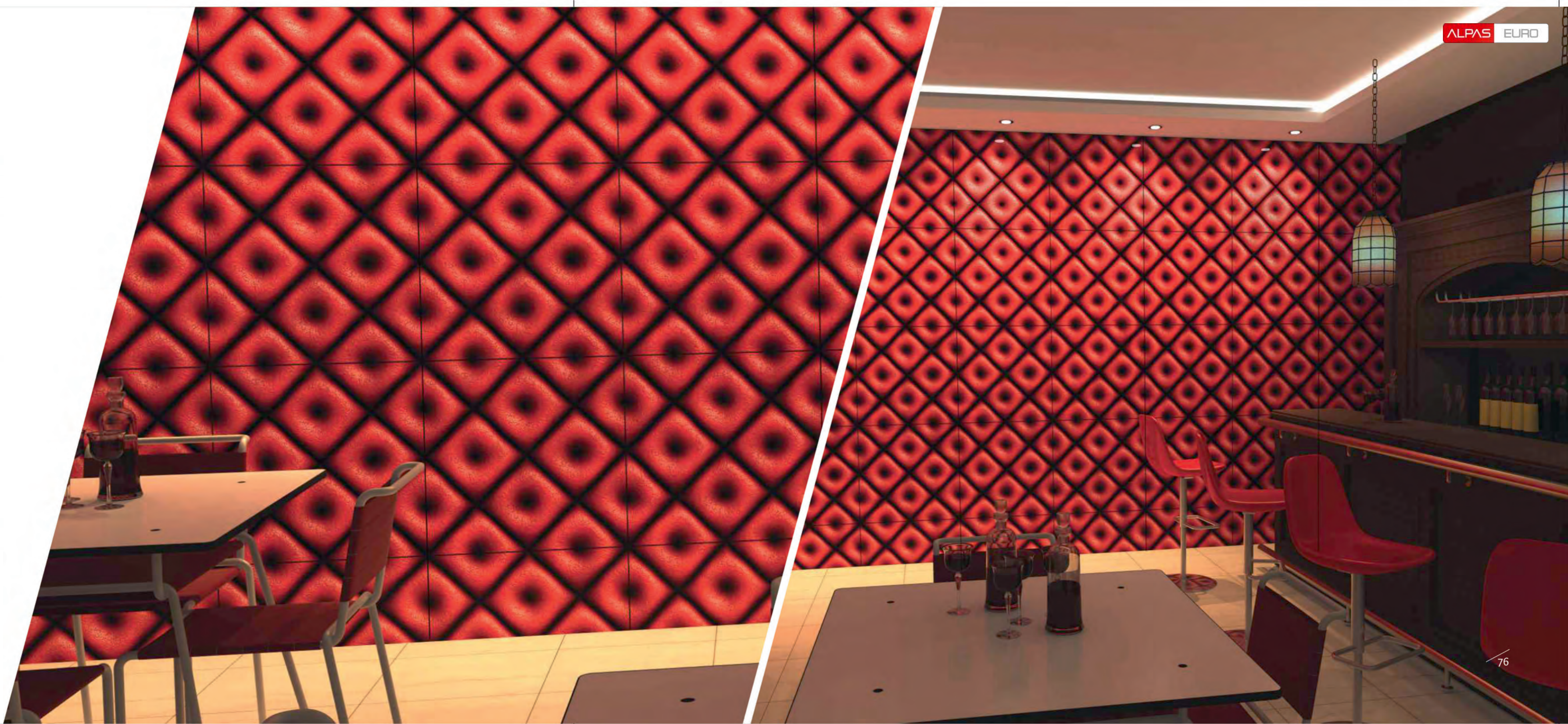
600x1200mm

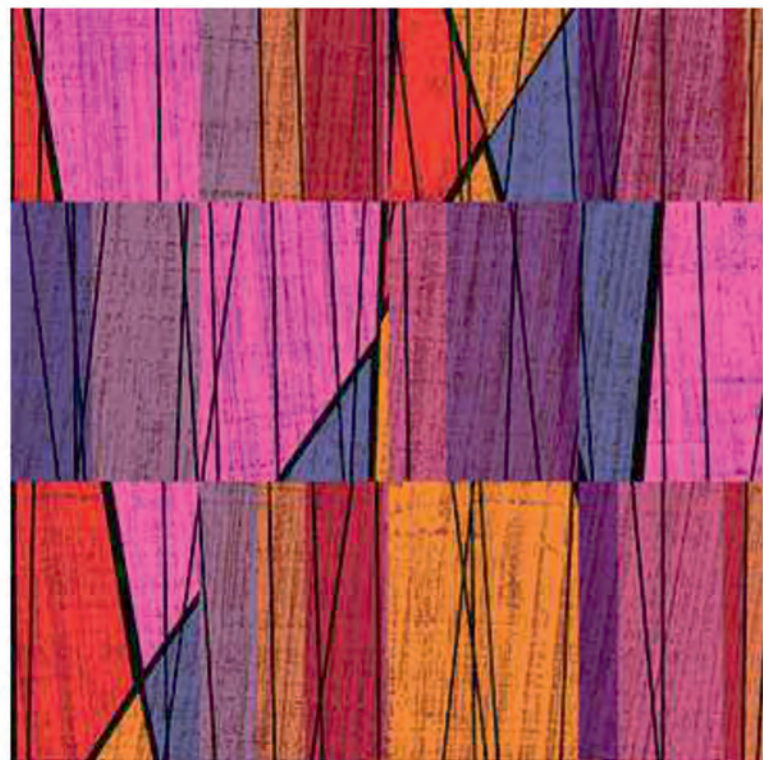




2011-RED FIRE

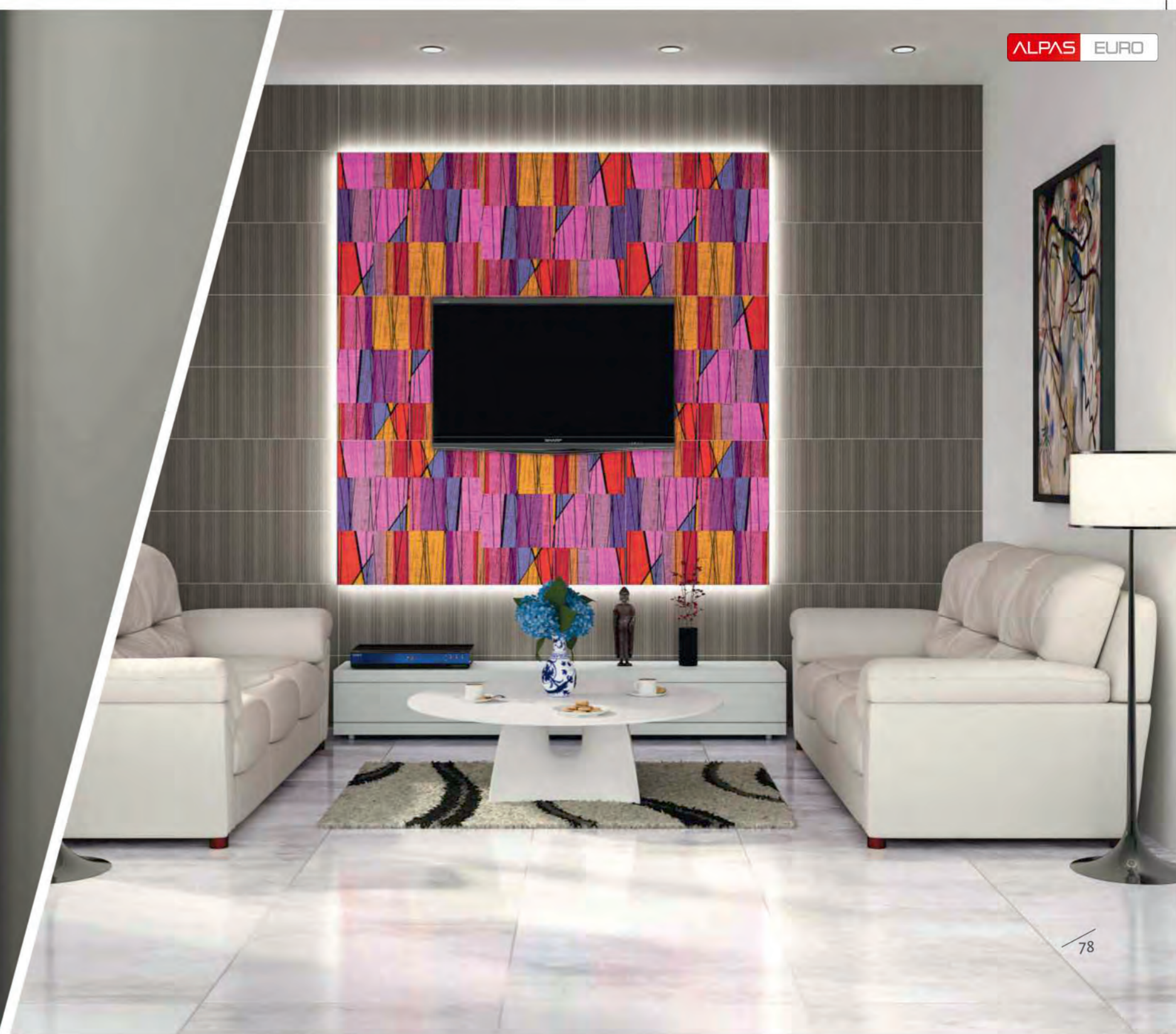
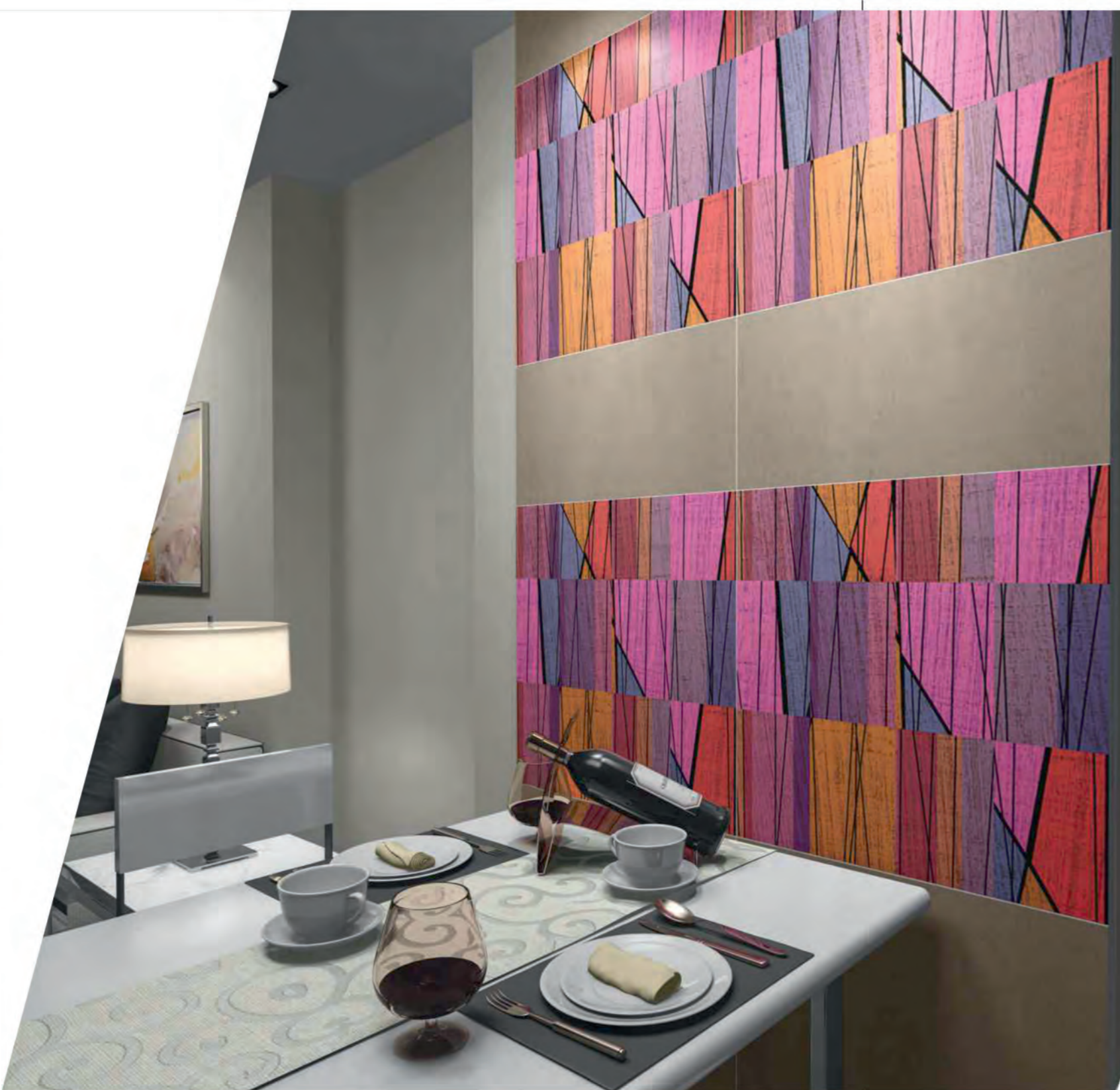
600 x 600mm

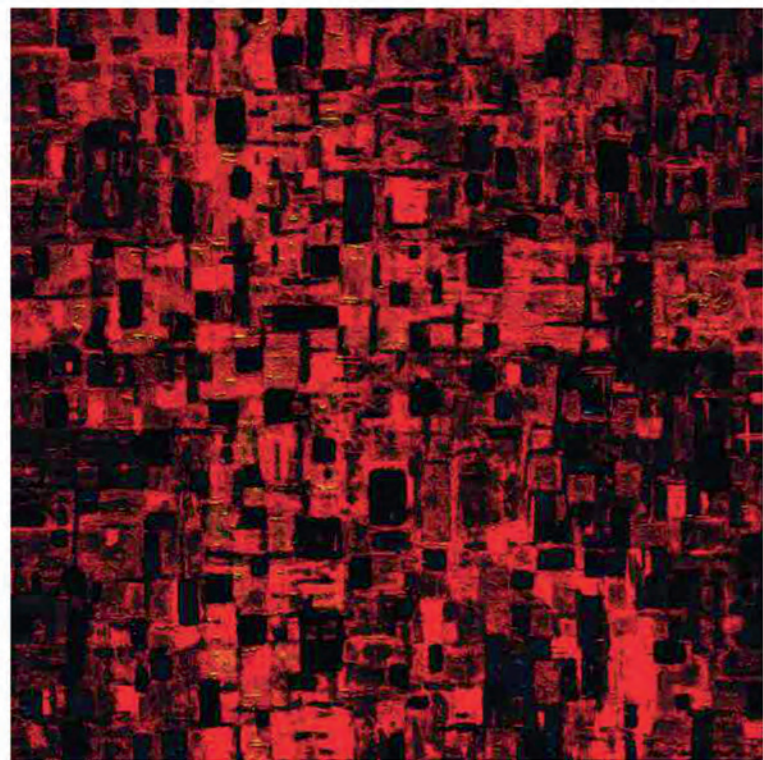




4004-LINEA

600 x 600mm





4005-RUSSET

600 x 600mm





4006-FABRIO

600 x 600mm



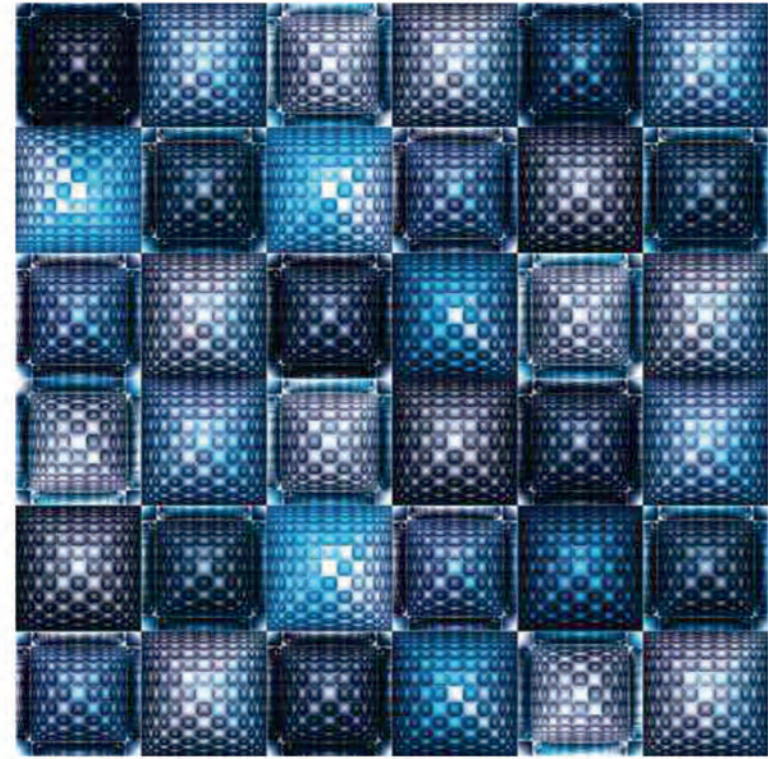


4008-ROCK GOLD

600 x 600mm



Elegante
PERSONELLE ALWAY



4010-BLUE SAPPHIRE

600 x 600mm





6001-AUTUMN

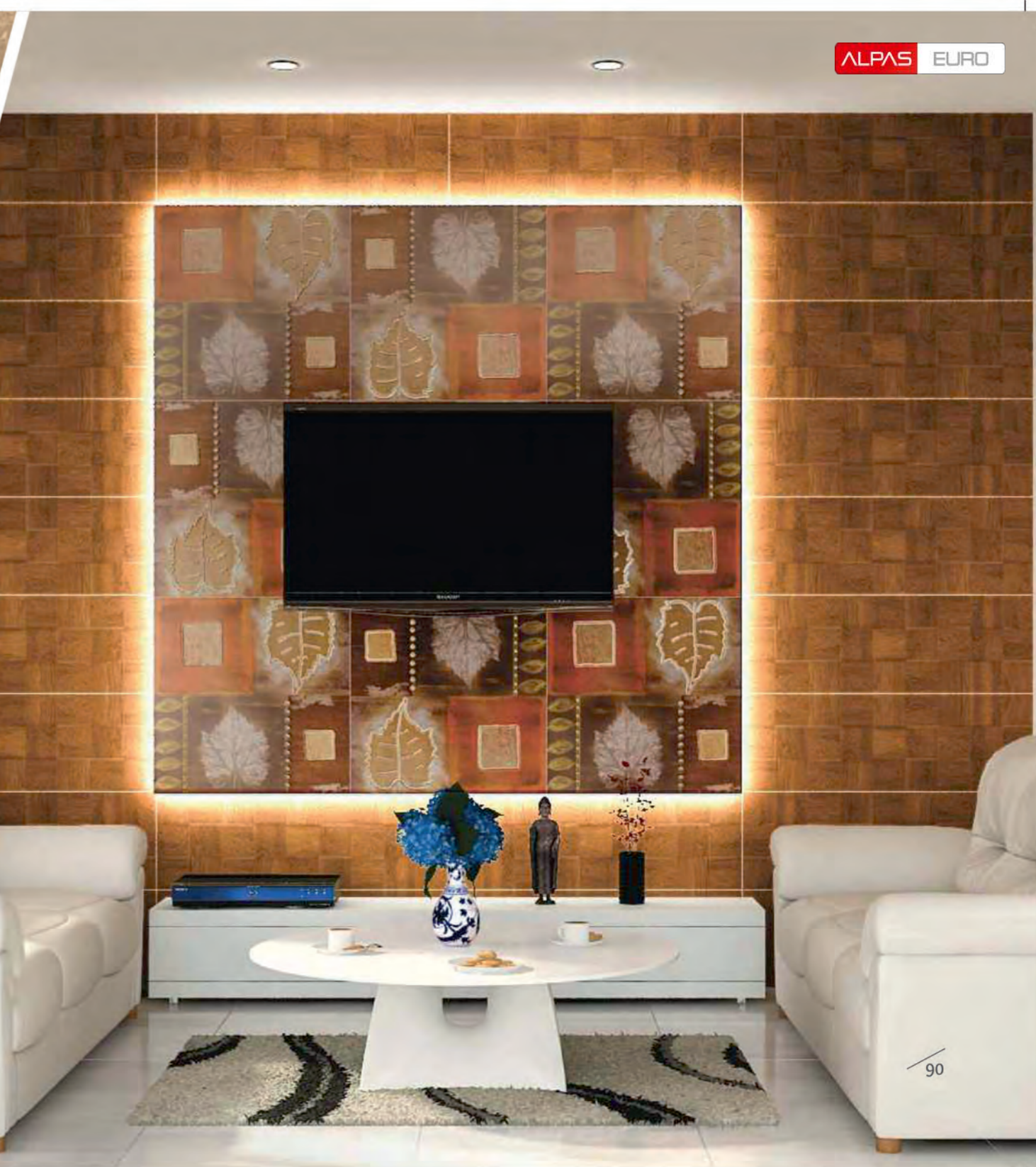
600 x 600mm





6002-MAPPLE GOLD

600 x 600mm





6003-FUSION

600 x 600mm





6004-ETHNIQUE

600 x 600mm





6005-HERITAGE

600 x 600mm





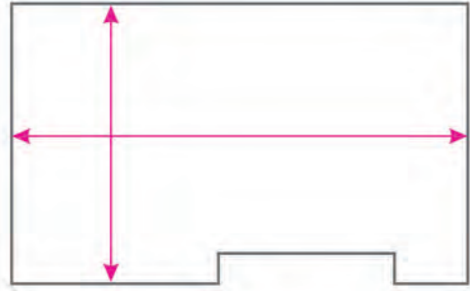
6006-ANTIQ

600 x 600mm

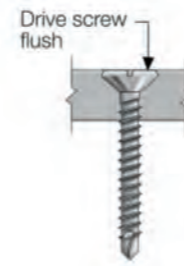


LAYING INSTRUCTION

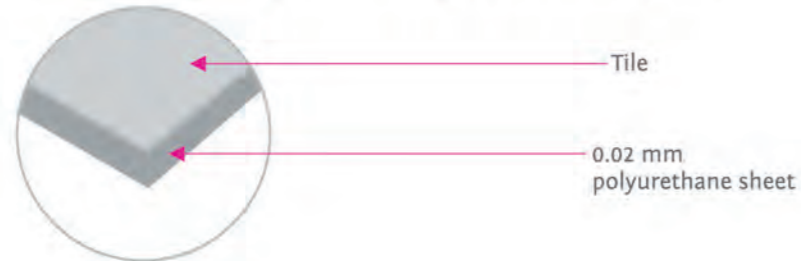
1) Measure the area where the tiles are intended to be fixed. Ensure the tiles quantity is appropriate for the total area to be tiled.



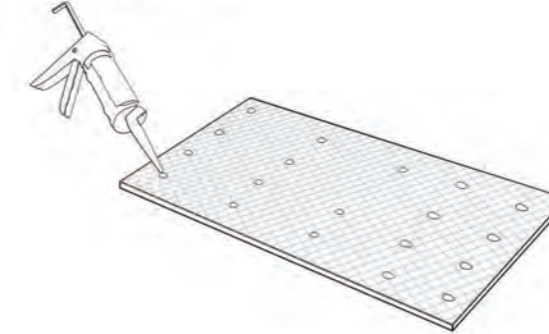
2) To ensure a flat base, it is advised to fix a flat cement sheet on the wall before fixing the tile.



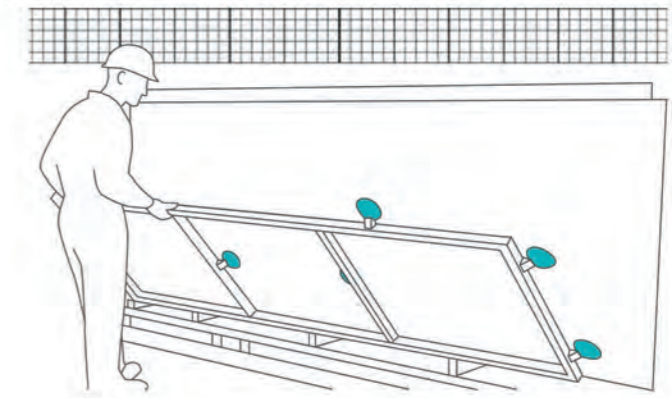
3) A 0.02 mm polyurethane sheet is applied on all edges of the tile as spacers.



4) Use a glue gun to spread silicon adhesive evenly on the back of the tile.



5) Fix the tile on the wall and make sure it is level with the ground.



6) Gently tap the tile to avoid any air pockets. It will also help in proper adhesion.

7) Whenever required, only use a special diamond cutting blade for cutting the tile.

iCut Elegante Blade
 Made from Diamond grid for cutting our tiles into required shapes to avoid cracks.



CUTTING INFORMATION

The proof of our pampering lies in the fact that our R&D team invented a special tool called 'iCut Elegante Blade' made from diamond grid for cutting our tiles into the required shapes.

We hope that you will take care of our babies with the same love and care with which we made, transported and delivered them to you. So below we share some easy ways to ensure longevity of tiles.

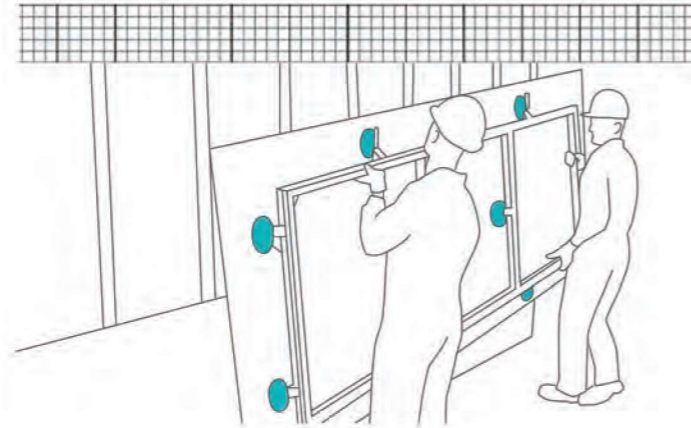
8) Use a diamond pad for edge polishing to remove rough or jagged edges after cutting the tile.

Diamond Hand Pad

Use to polished the edges for closing the open edges to avoid cracks after cutting)



9) Use vacuum pads to handle and adjust the level of the tile, when installing at a height.



10) Use round drill bits while constantly sprinkling water to drill holes in the tile.
For round cutting, it is advised to cover the area of cutting with ebro / paper tape prior to cutting. This ensures non-cracking / chipping of the adjacent area within the tile.

Diamond Circular Tool

Use for drilling holes into tiles to avoid cracks after cutting with water.



CARE & MAINTENANCE :

Use clean water for washing
Use good quality non-alcoholic cleansing agent to remove the stains and retain its lustre
Use soft smooth clean clothe for wiping
To drill holes in the tiles, use the same diamond tools used for glass cutting
To cut the tiles, use either water-jet cutting or 'iCut Elegante Blade' designed exclusively for these tiles

HANDLE WITH LOVE

We love our tiles so much that we treat every single piece like a queen. We pamper them with tender care and groom them in luxurious comfort that a royal lineage deserves.

Every tile is first packed individually, with specially designed cushions protecting it from all sides. The tile is then placed with another such packed piece before covering the pair in a larger package. Consequently, each tile has triple layered protection to prevent its surface from scratches and corners from chip-offs during transportation and storage.

TECHNICAL SPECIFICATION

CHARACTERISTIC	INTERNATIONAL STD. ISO 13006/EN 176 GROUP	OUR VALUE
DIMENSION & SURFACE QUALITY		
▬ Deviation In Length	±0.6%	±0.3%
⚡ Deviation In Thickness	±5%	±5%
▬ Straightness of Sides	±0.5%	±0.1%
▬ Rectangularity	±0.6%	±0.2%
↔ Surface Flatness	±0.5%	±0.2%

PHYSICAL & THERMAL PROPERTIES		
💧 Water Absorption	<0.5%	<0.05%
🔪 Mohs Hardness	>6	>4
✳️ Flexural Strength	>35 N/mm ²	46 N/mm ²
📏 Breaking Strength	1113 N	2800 N
🌡️ Thermal Shock Resistance	No Damage	No Damage
💧 Moisture Expansion	NIL	NIL

CHEMICAL PROPERTIES		
🧴 Chemical Resistance	No Damage	No Damage
🎨 Colour Resistance	No Damage	No Damage
🍷 Stain Resistance	Resistant	Resistant

PACKING DETAIL

Dimension (mm)	Box			
	Thickness*	Pieces	m sqm	Weight (kg)
600 x 1200	10mm	2	1.44	38 kgs
600 x 600	10mm	2	1.08	28 kgs

DISCLAIMER:
Colors shown are as accurate as the limitations of the printing process will allow. Prospective customers are advised to inspect a sample of the tile before ordering. Every effort has been made to ensure the accuracy of the information give. However, the company reserves the right to change the specifications without any notice. Sometimes variations in shade or size being inherent to ceramic industry may occur. Before fixing, we advice you to follow the fixing instructions on the cartons of the tiles as no responsibility can be accepted by the company once the tiles have been fixed.

*NOTE: Please note that the images of female models in this catalogue are royalty-free and have been licensed from Shutterstock.

